

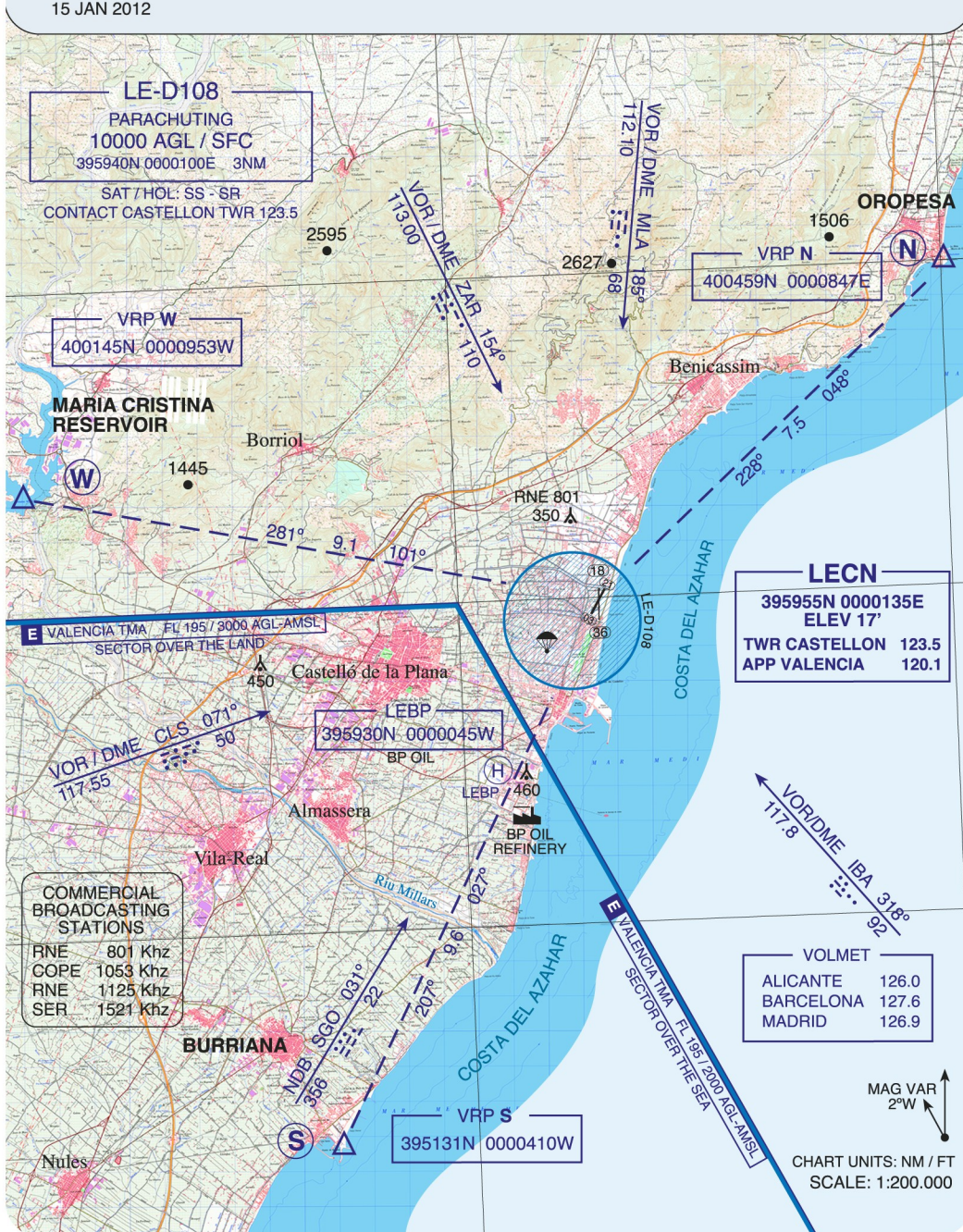
# LECN

AERODROMO DEL PINAR DE CASTELLON

## UNOFFICIAL VFR APPROACH CHART

NON CONTROLLED VFR-HJ AERODROME

15 JAN 2012



# LECN

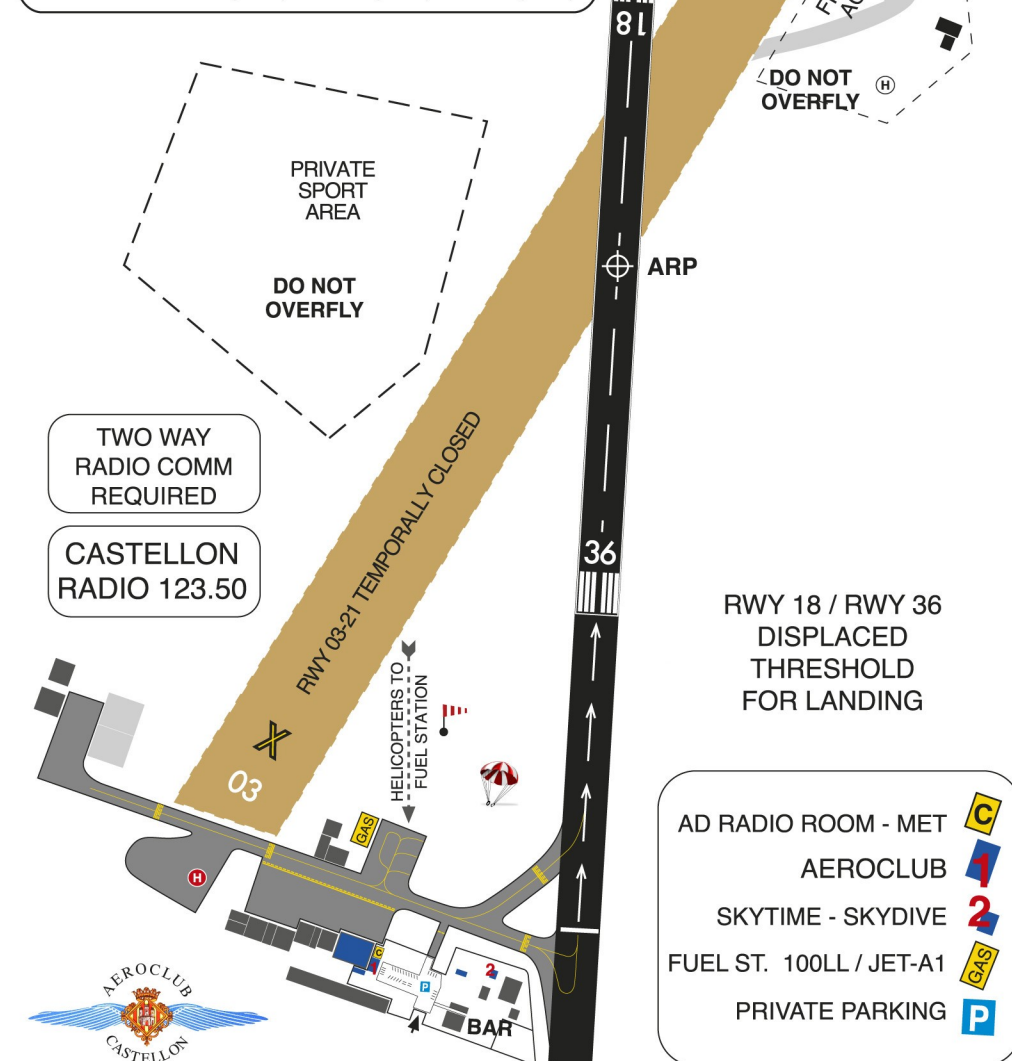
AERODROMO DEL PINAR DE CASTELLON

## UNOFFICIAL AERODROME CHART

NON CONTROLLED VFR-HJ



RWY		ASDA		LDA		TORA/TODA	
		FT	MT	FT	MT	FT	MT
18	ASPH	2592	(790)	2215	(675)	1890	(576)
36	ASPH	2592	(790)	1890	(576)	2215	(675)
03	SOIL	2503	(763)	2044	(623)	2195	(669)
21	SOIL	2503	(763)	2195	(669)	2044	(623)



## GENERAL INFORMATION

Castellon is a non controlled aerodrome, VFR-HJ operation. However, non official useful information of known traffics, wind, runway in use, etc, will be provided on Castellon Radio, freq.123,50, when maned.

"When the flight is carried out in accordance with Visual Flight Rules, the Captain of the aircraft is directly responsible for avoiding collisions with obstacles and other aircraft. (RCA, Libro VI, 6.1.9)

A two-way radio is compulsory to operate at the aerodrome other than very exceptional cases with previous coordination.

Main RWY is 18-36. RWY 03-21 is temporally closed. Displaced thresholds for landing in all runways..

## DEPARTURE

Allways RADIO CONTACT 123.50 before start-up.

DO NOT START-UP IF NOT SURE THERE ARE NO PARACHUTES DROPPING.

IF there is NO REPLAY notify intentions and transmit position reports while flying outbound until 10 NM out.

## ARRIVAL

ARRIVING aircrafts MUST contact **Castellon Radio** when reaching reporting points N, S, W, or 10 NM inbound the field when coming from the East. If there is no replay, pilots will transmit position reports and notify intentions, coordinating with other traffics.

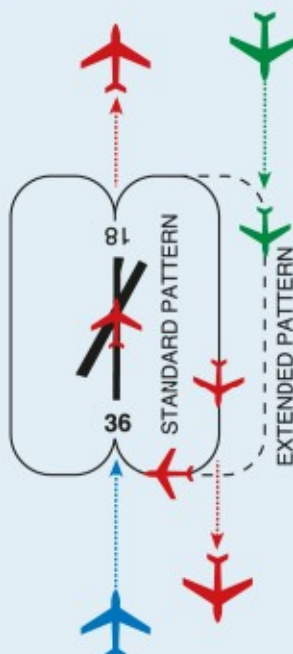
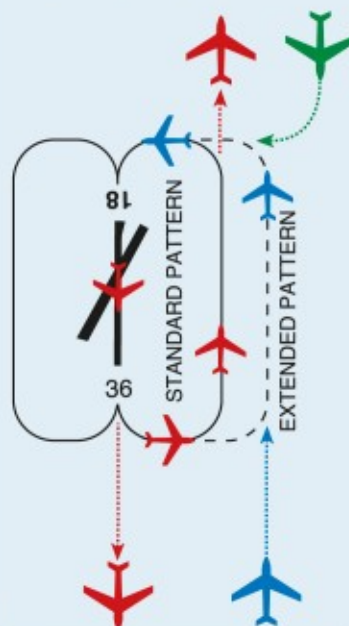
NORMAL CIRCUIT PATTERNS OVER THE SEA

When **RWY 18** IN USE, aircrafts proceeding from South will pay attention to take-offs on rwy heading and turning left to cross-wind. DO NOT approach the field just OVERFLYing the coast line and maintain enough separation from it when entering left down wind.

When **RWY 36** in use, pay attention to traffics on right down wind or right base.

SAFE PILOTS ARE WELCOME.

## RWY 18 IN USE



## RWY 36 IN USE

## HELICOPTERS

IT IS FORBIDDEN to all helicopters (even light ones) translational flying nor hovering over the taxiway from hangars to holding point rwy 36.

Helicopters intending to refuel, will approach from North, flying over the central part of the field, leaving the wind shock on their left and straight on to the apron, next to the fuel station.

## WARNINGS

**GOOD RELATIONSHIP WITH NEIGHBORHOOD:** In order to have a good relationship with neighborhood, if wind allows so and no other airplane in the circuit, runway 18 will be preferably used for landings and 36 for take-offs. In all cases a perfect coordination must be established with other possible traffics in the area. There are some local rules and time restrictions for "touch & go" procedures.

**FLYING NEAR REFINERY:** Do not overfly the refinery.

**FLIGHT PLAN:** It's captain's responsibility to fill out a flight plan, open and close it or check that someone in the radio room has done it for him.

ARO LEVC phone 96 1598539. Valencia APP freq 120.10

**TAXIING TO HOLDING POINT RWY 18:** Consider using RWY 03 for taxi to the intersection with the asphalt runway and then back track to holding point RWY 18.

## CAUTIONS

**PARACHUTING:** Frequent parachuting activity.

DO NOT take off or land IF there are parachutes in the air. The parachutist's airplane pilot will always notify "two minutes for drop" and "dropping now"

**WINDS:** With strong or moderate NE WINDS some turbulence and downdraft may be found landing on RWY 36 because of building and trees on the beach.

**OBSTACLES** just before the runway ! DO NOT try to touchdown before the threshold and fly with a normal, (not a shallow gradient) on very short final !

**OBSTACLE NEAR RWY 18:** 107 mts / 350 ft height (aprox) commercial radio antenna, 2.5 kms / 1,4 nm (aprox) NW of the field (close to right base 18)

**HEAVY RAIN:** After long periods of abnormal heavy rain, both runways but specially 03-21 might be swamped and occasionally, flooded. Call and / or check first.



## AERoclub DE CASTELLON

Camino de la Plana s/n  
12100 Grao de Castellon  
Spain

www aeroclubcastellon.com

E-mail info@aeroclubcastellon.com

Administration (34) 964 283 521 (10:00 -14:00 )

Radio Room (34) 964 282 314